



Epilepsy Monitoring of Prospective Seizure Observations with Electronic Records (EMPOWER): An Observational Study Designed to Better Understand the Patient Journey

Karl Hansen¹, Silvana Frizzo¹, Brittany Gazdag¹, Jack Mead², Steven Petrou¹, Marcio Souza¹, Jacqueline French²

¹Praxis Precision Medicines, Boston, MA, USA; ²Ambit Inc, Boston, MA, USA; ³NYU Comprehensive Epilepsy Center, New York, NY, USA

Background

- Epilepsy is a complex neurological disease characterized by unprovoked, spontaneous seizures with a global prevalence of ~65 million people.
- In the US, an estimated 3.5 million have an epilepsy diagnosis, almost a third of whom live with uncontrolled seizures.
- Associated with this is decreased quality of life and increased risk of overall mortality from sudden unexpected death in epilepsy (SUDEP) and seizure-related accidents.
- EMPOWER is an ongoing study led by Praxis Precision Medicines, in partnership with the Epilepsy Study Consortium, which aims to characterize seizure burden and antiseizure medication (ASM) use patterns over time in epilepsy patients; empowering them to actively participate in their epilepsy journey; and help identify subjects for Praxis clinical trials.

EMPOWER Study Overview

- EMPOWER aims to recruit US participants aged ≥18 years with a confirmed epilepsy diagnosis.
- Participants who elect to enroll are followed for a prospective observational period of up to 24 months.
- EMPOWER includes a survey across 4 main areas: epilepsy history; current seizure experience; seizure tracking; personal information (e.g., age, gender, etc.)
- Eligible participants will access an electronic seizure diary to record seizures and ASM use.
- Participants opting to share medical records will have linked records capturing seizure-related disease course, and prospectively tracking intercurrent events (e.g. hospitalizations, infections).
- Study surveys will collect information including demographics, seizure types/counts and seizure tracking behavior.
- Periodically, summarized deidentified reports will be shared with participants to facilitate learning from others' experiences.
- Data are presented from 183 respondents, matched in open claims, with an epilepsy ICD10 code from 1 January 2023 to 31 December 2024.

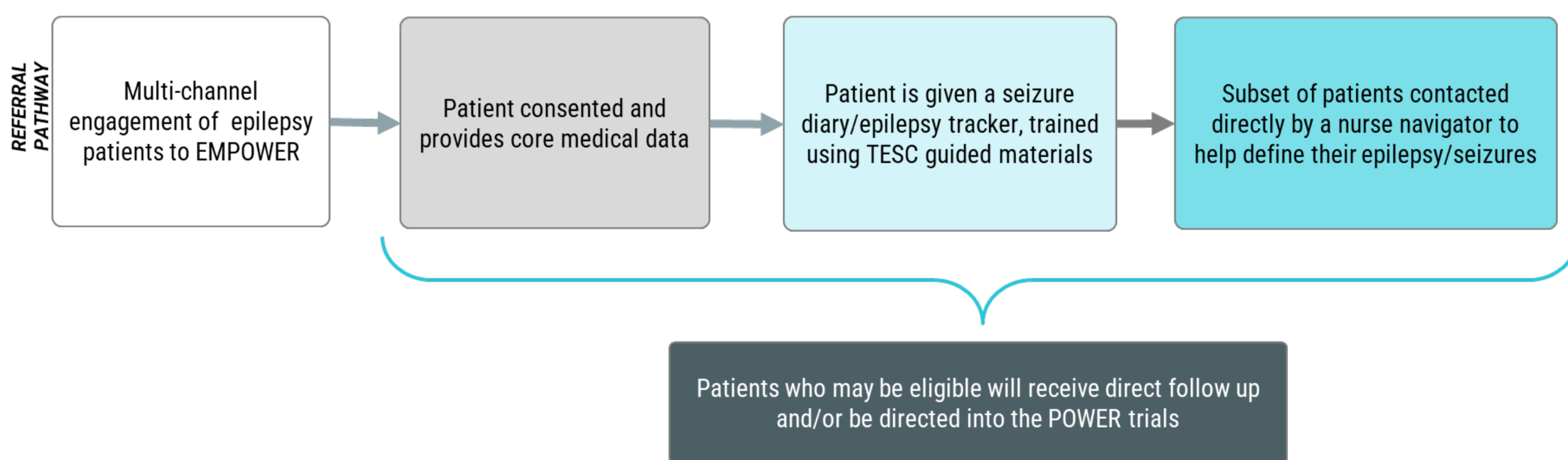
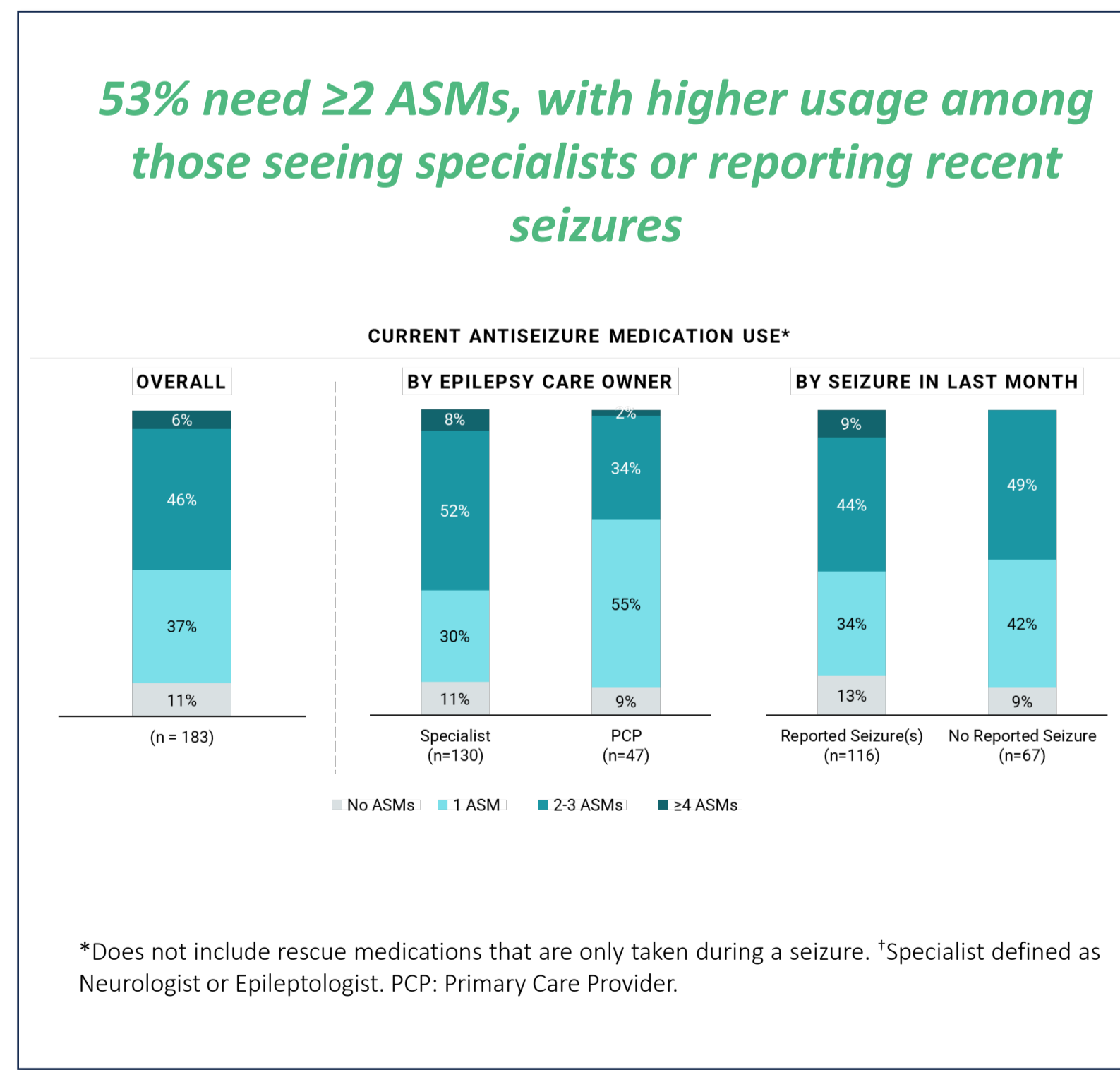
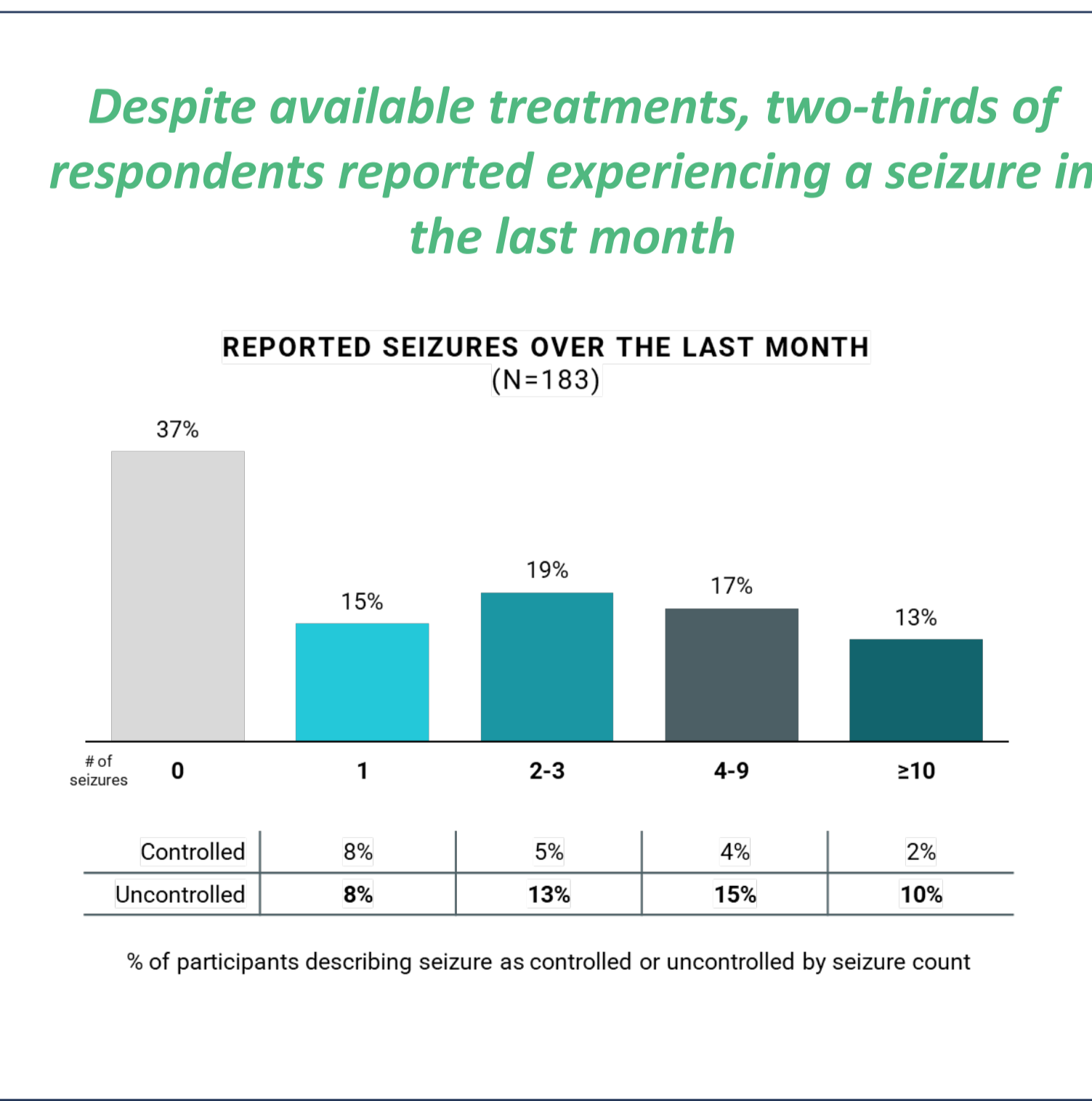
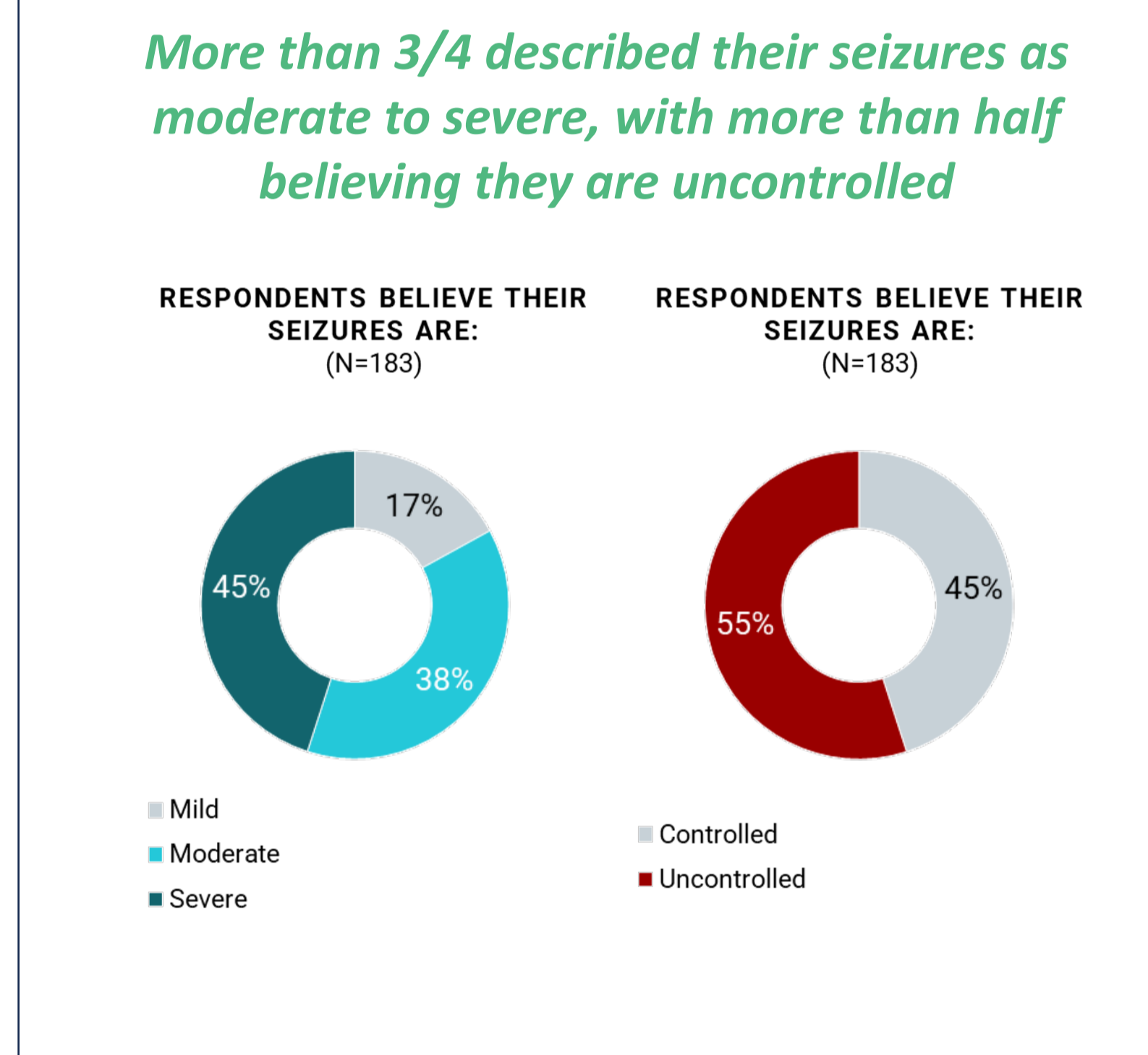
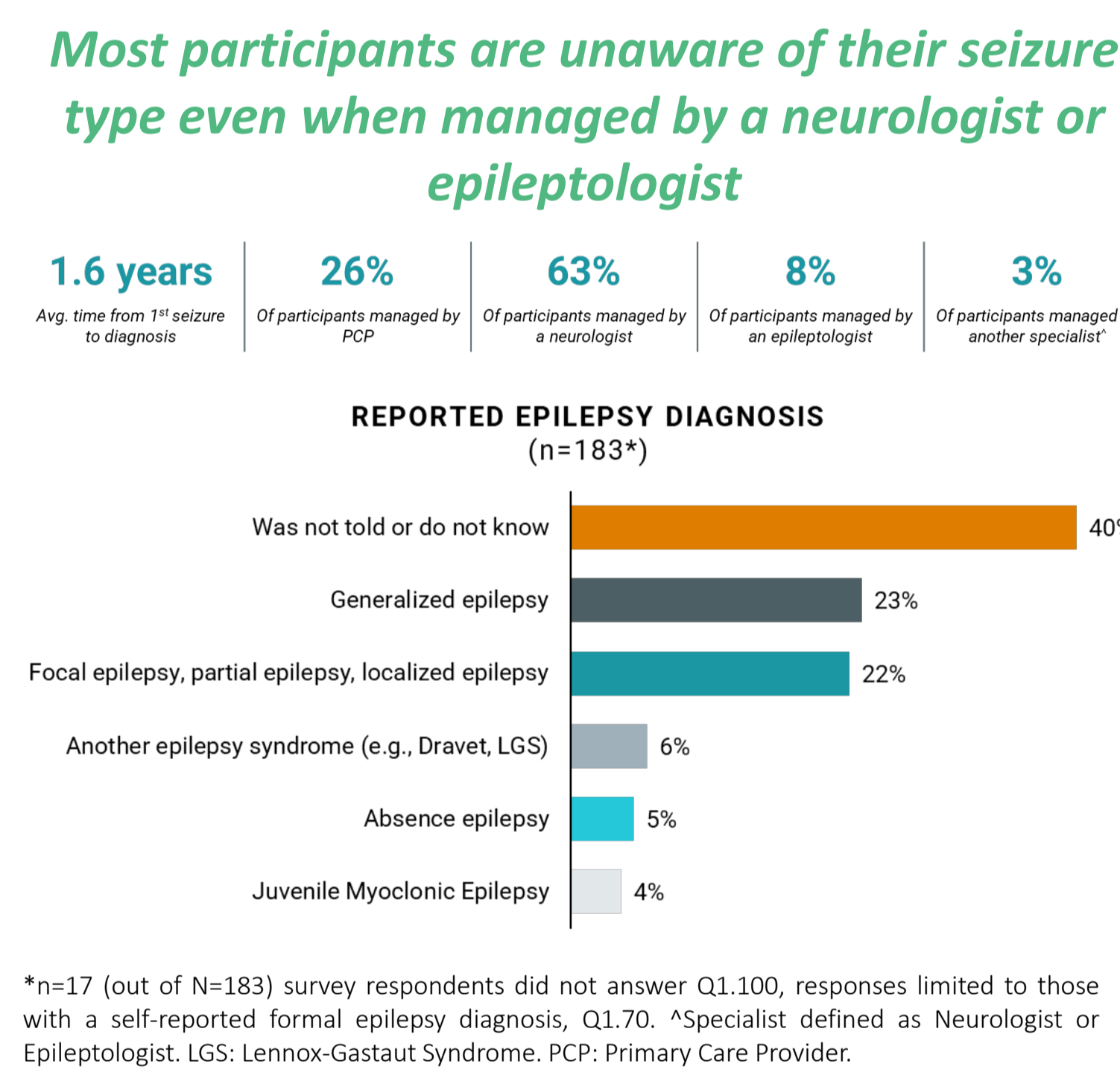
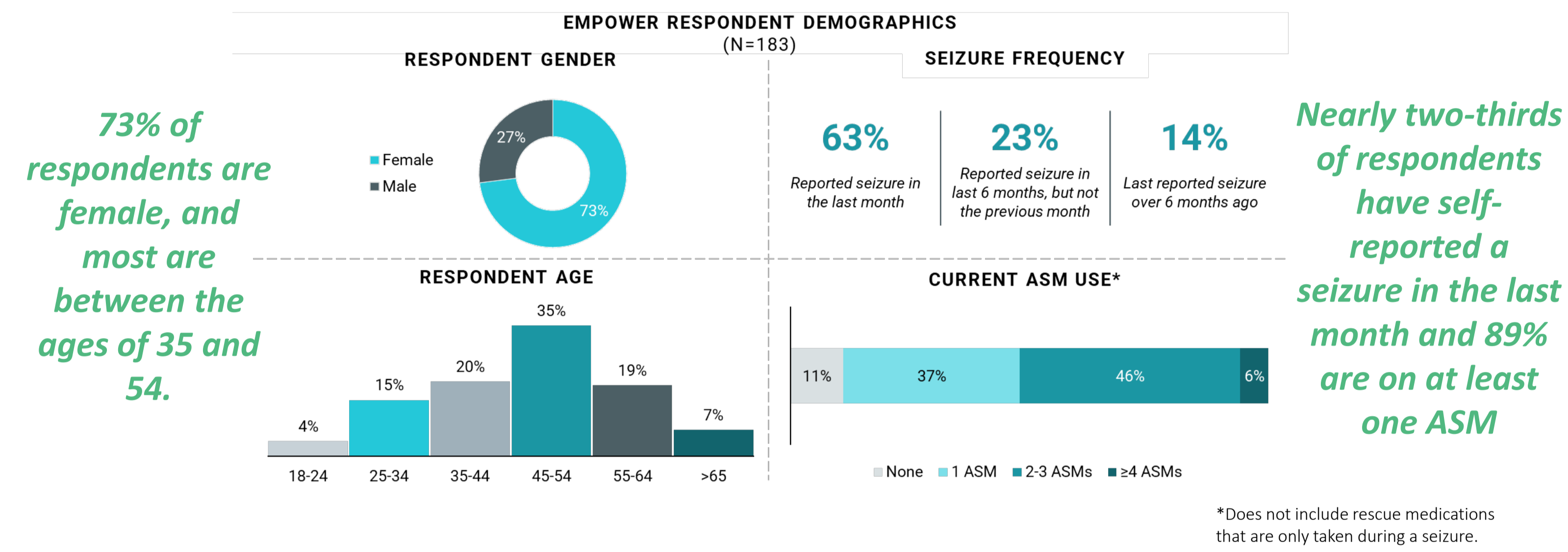
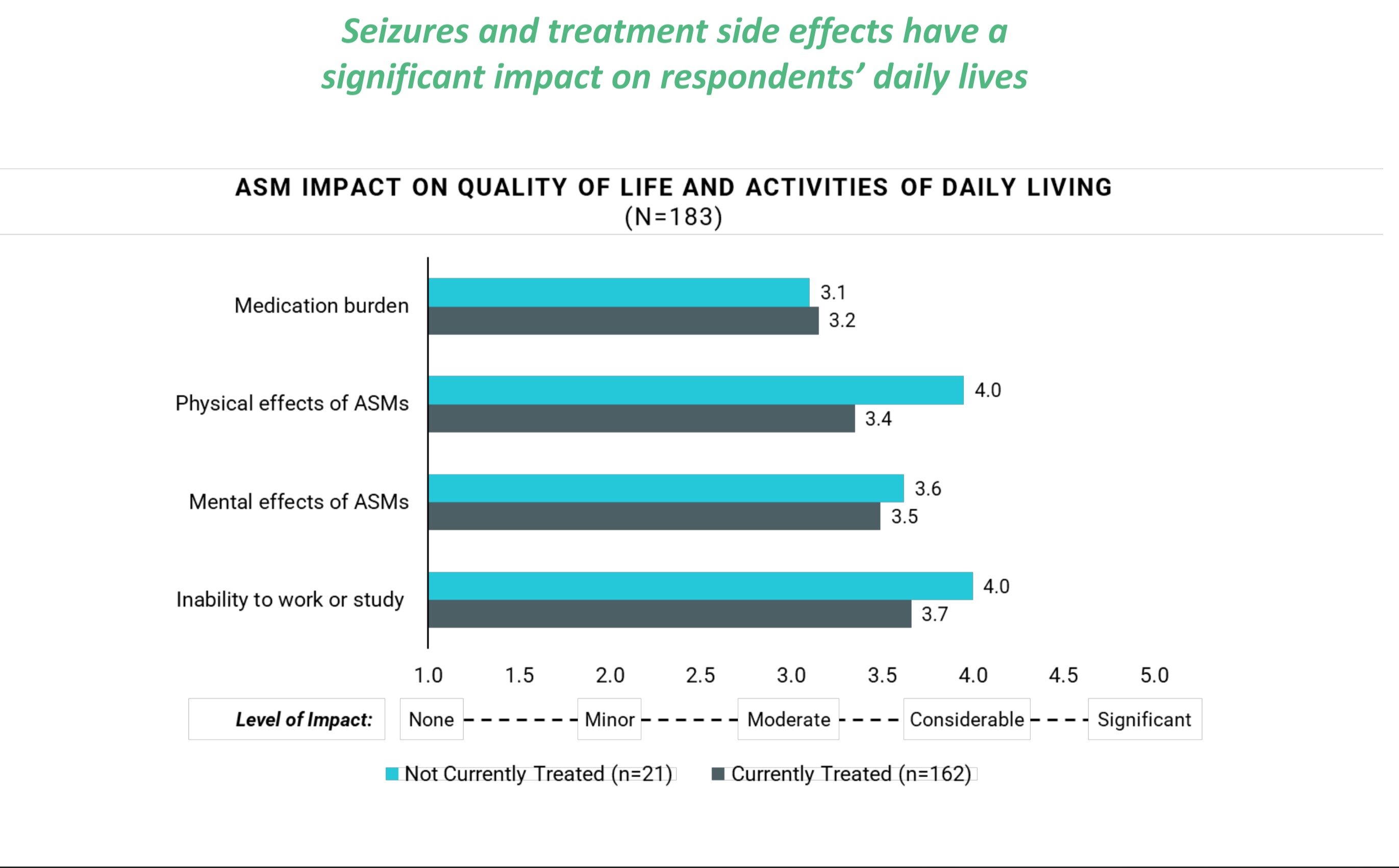
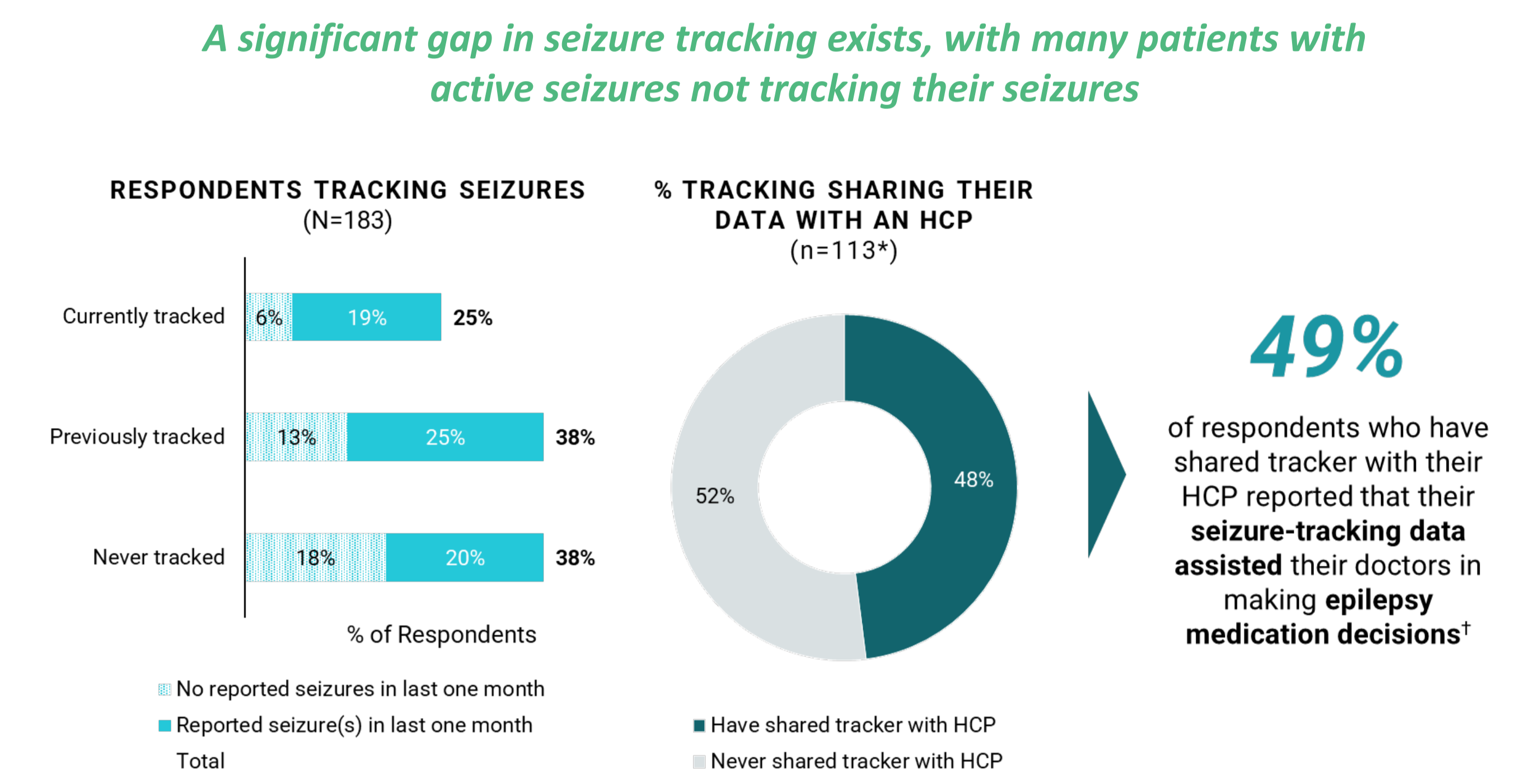


Figure 1. The EMPOWER study is designed to better understand the epilepsy patient journey In partnership with the Epilepsy Study Consortium (ESCI).

Key Demographics and Seizure Experience



Seizure Tracking and Quality of Life Impact



Conclusions

- The EMPOWER observational study, in partnership with the Epilepsy Study Consortium, is ongoing with over 3,000 patients consented.
- EMPOWER continues to generate standardized, longitudinal data to support planned interventional trials and deepen understanding of patient experiences of epilepsy.
- Findings to date reveal a significant disease burden compounded by persistent, uncontrolled, often untracked seizures alongside profound psychosocial impact.

References

- CDC 2015 US Prevalence Data
- Gupta et al 2017 *Epilepsia Open*
- Seiden & Connor 2022 *Epilepsy & Behavior*

Funding Medical writing and editorial assistance were provided by Lillian G. Matthews in accordance with Good Publication Practice (GPP3).
Disclosures KH, SF, BG, SP, MS and JF are current or former employees/consultants of Praxis Precision Medicines and may be Praxis shareholders

@PraxisMedicines
Praxismedicines.com
Praxis Precision Medicines
clinicaltrials@praxismedicines.com

Connect with us
Booth #2113



Presented at:
American Academy of Neurology
AAN 2025 Annual Meeting
April 5-9, 2025
San Diego, California USA